

BALDOR® • RELIANCE 

Product Information Packet

VRBM3558T

2HP,1700RPM,3PH,60HZ,145TC,7536M,TEFC,F1

Part Detail							
Revision:	T	Status:	PRD/A	Change #:		Proprietary:	No
Type:	AC	Elec. Spec:	75WGW062	CD Diagram:	CD0005	Mfg Plant:	
Mech. Spec:	75J035	Layout:	75LYJ035	Poles:	04	Created Date:	04-17-2008
Base:	N	Eff. Date:	06-29-2018	Leads:	9#18		

Specs			
Catalog Number:	VRBM3558T	Feedback Device:	NO FEEDBACK
Enclosure:	TEFC	Heater Indicator:	No Heater
Frame:	145TC	Insulation Class:	F
Frame Material:	Aluminum	Inverter Code:	Not Inverter
Output @ Frequency:	2.000 HP @ 60 HZ	KVA Code:	L
Synchronous Speed @ Frequency:	1800 RPM @ 60 HZ	Motor Lead Quantity/Wire Size:	9 @ 18 AWG
Voltage @ Frequency:	460.0 V @ 60 HZ	Motor Type:	7536M
	230.0 V @ 60 HZ	Mounting Arrangement:	F1
XP Class and Group:	None	Power Factor:	77
XP Division:	Not Applicable	Product Family:	General Purpose
Agency Approvals:	UR	Rodent Screen:	None
	CSA	Shaft Extension Location:	Pulley End
Base Indicator:	No Mounting	Shaft Rotation:	Reversible
Bearing Grease Type:	Polyrex EM (-20F +300F)	Shaft Slinger Indicator:	No Slinger
Blower:	None	Speed Code:	Single Speed
Current @ Voltage:	2.900 A @ 460.0 V	Motor Standards:	NEMA
	5.800 A @ 230.0 V	Starting Method:	Direct on line
Design Code:	D	Thermal Device - Winding:	None

Duty Rating:	CONT	Winding Thermal 1:	None
		Winding Thermal 2:	None

Nameplate NP1256L										
CAT.NO.	VRBM3558T									
SPEC.	75J035W062H2									
HP	2									
VOLTS	230/460									
AMP	5.8/2.9									
RPM	1700									
FRAME	145TC				HZ	60			PH	3
SER.F.	1.15		CODE	L	DES	D		CLASS	F	
NEMA-NOM-EFF	84		PF	77						
RATING	40C AMB-CONT									
CC	USABLE AT 208V									
DE	6205				ODE	6205				
ENCL	TEFC		SN							

Parts List		
Part Number	Description	Quantity
SA170246	SA 75J035W062H2	1.000 EA
RA158496	RA 75J035W062H2	1.000 EA
NS2512A01	INSULATOR, CONDUIT BOX X	1.000 EA
75CB3000A04	COND BOX FOR 75SF2000 (REL# 7932952C)	1.000 EA
51XT1032A10	10-32X.62 HX SLD WASHER TAPP SERRATED	3.000 EA
WD4100A01	DP-875 HEYCO PLUG OR 62MP0875 MICRO PLAS	1.000 EA
51XN0832A16	8-32 X 1.00 HEX SLOT WSHR HD MACH SCREW	1.000 EA
XY0832A02	8-32 HEX NUT	1.000 EA
HW1001A08	WASHER, #8 SPLT LK, ZN	1.000 EA
11XW1032G06	10-32 X .38, TAPTITE II, HEX WSHR SLTD U	1.000 EA
HW3001B01	BRASS CUP WASHER, FOR #10 SCREW	1.000 EA
HW5100A05	WVY WSHR F/205 & 304 BRGS	1.000 EA
35EP3307F00	MASTER DE,205 BRG,.998SH,#26 DRN	1.000 EA
51XN1032A20	10-32 X 1 1/4 HX WS SL SR	2.000 EA
BR2003D01	SPLINED HUB 7/8 W/O KEY, W/SET SCREWS	1.000 EA
WD4006A01	WIRE JOINT,T&B RB-4 OR RB-44	1.000 EA
35FN3003A02	EXFN, PLASTIC, 5.88 OD, .876 ID (REL)	1.000 EA
35FH4007A01	FAN COVER FOR SHORT SERIES BRAKE, PRIMER	1.000 EA
51XW1032A06	10-32 X .38, TAPTITE II, HEX WSHR SLTD S	4.000 EA
35CB4517	LIPPED LID, 4 MTG HOLES, (RELIANCE# 7932	1.000 EA
51XW0832A07	8-32 X .44, TAPTITE II, HEX WSHR SLTD SE	4.000 EA
HW2501D13	KEY, 3/16 SQ X 1.375	1.000 EA
HA7000A04	KEY RETAINER 0.625 DIA SHAFTS	1.000 EA
85XU0407S04	4X1/4 U DRIVE PIN STAINLESS	2.000 EA

Parts List (continued)		
Part Number	Description	Quantity
LB1418	INTEGRAL BRK ADJ LABEL (REL# 41171617A)	1.000 EA
MJ1000A02	GREASE, MOBIL POLYREX EM - 124047	0.050 LB
HW1001A10	WASHER, #10 SPLT LK, ZN X	4.000 EA
HW2501D13	KEY, 3/16 SQ X 1.375	1.000 EA
HW1001A10	WASHER, #10 SPLT LK, ZN X	4.000 EA
MG1000G27	MED CHARCOAL METALLIC GREY 400-0096	0.017 GA
HA3100A25	THRUBOLT 10-32 X 11.000	4.000 EA
43BK0300B02	SSB-10-230/460 (205)L-HUB	1.000 EA
031389	DODGE FAST RESPONSE KIT 230V	1.000 EA
LC0005E01	CONN.DIA./WARNING LABEL (LC0005/LB1119N)	1.000 EA
NP1256L	ALUM UL CSA CC INDUSTRIAL MOTOR A60	1.000 EA
G7PA1000	PKG GRP, PRINT PK1034A06	1.000 EA
PK3082	STYROFOAM CRADLE	1.000 EA
PE-0000001	ZRTG PE ASSEMBLY	1.000 EA

AC Induction Motor Performance Data

Record # 26788 - Typical performance - not guaranteed values

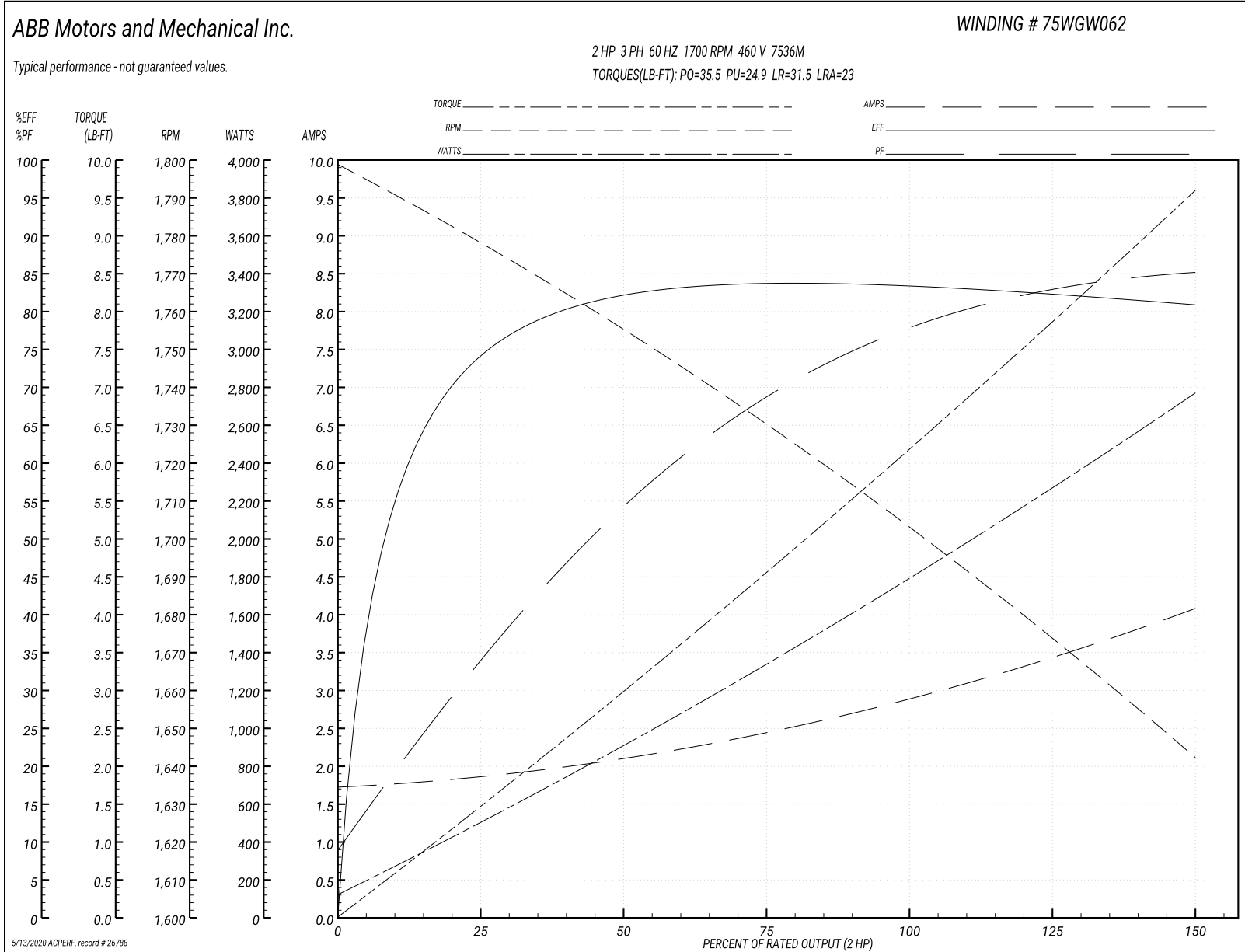
Winding: 75WGW062-R001	Type: 7536M	Enclosure: TEFC
-------------------------------	--------------------	------------------------

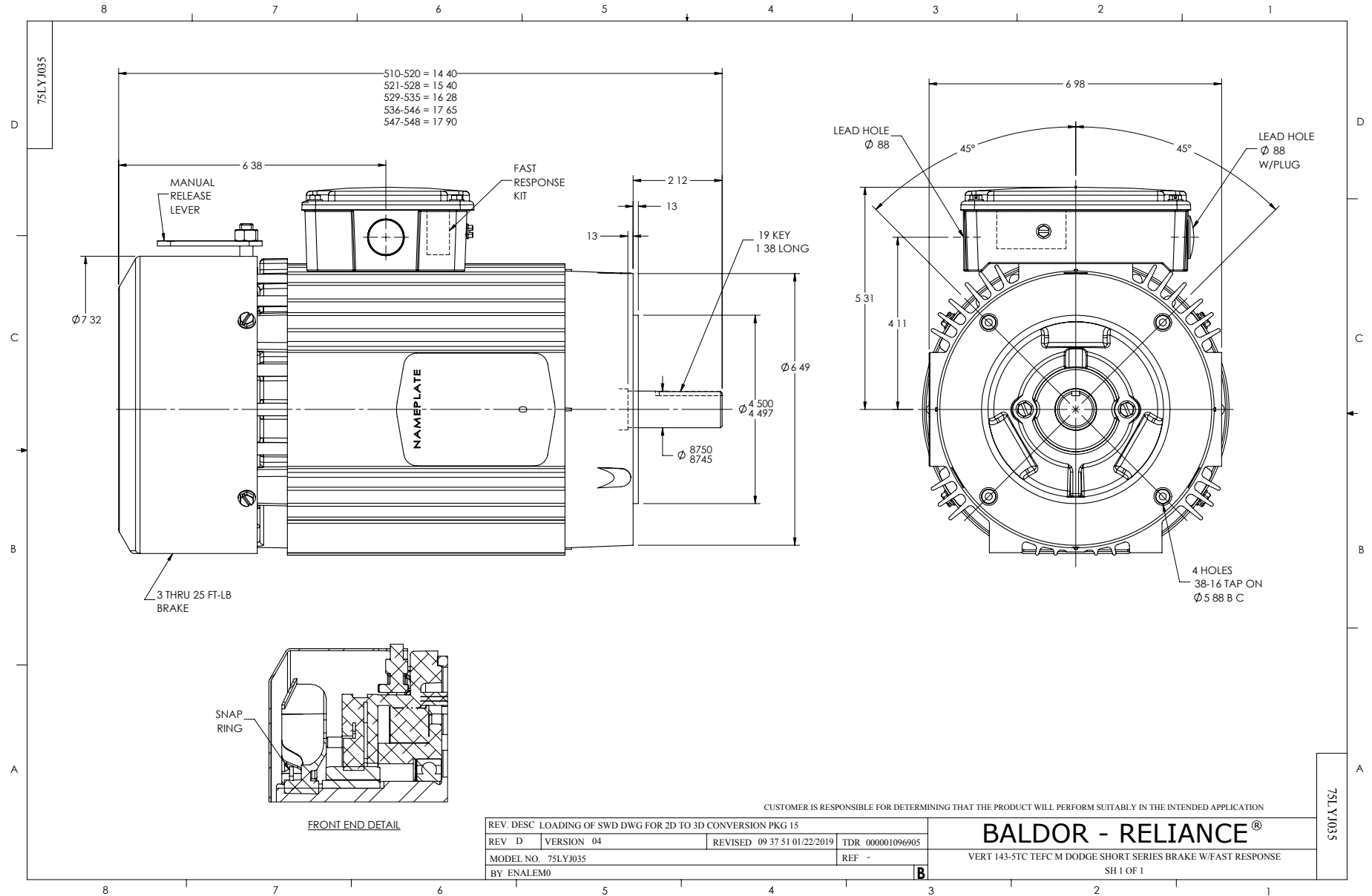
Nameplate Data				460 V, 60 Hz: High Voltage Connection	
Rated Output (HP)	2			Full Load Torque	6.2 LB-FT
Volts	230/460			Start Configuration	direct on line
Full Load Amps	5.8/2.9			Breakdown Torque	35.5 LB-FT
R.P.M.	1700			Pull-up Torque	24.9 LB-FT
Hz	60	Phase	3	Locked-rotor Torque	31.5 LB-FT
NEMA Design Code	D	KVA Code	L	Starting Current	23 A
Service Factor (S.F.)	1.15			No-load Current	1.75 A
NEMA Nom. Eff.	84	Power Factor	77	Line-line Res. @ 25°C	6.35 Ω
Rating - Duty	40C AMB-CONT			Temp. Rise @ Rated Load	40°C
S.F. Amps				Temp. Rise @ S.F. Load	49°C
				Locked-rotor Power Factor	66
				Rotor inertia	0.213 LB-FT ²

Load Characteristics 460 V, 60 Hz, 2 HP

% of Rated Load	25	50	75	100	125	150	S.F.
Power Factor	35	55	68	77	82	86	80
Efficiency	75.5	83	84.7	84.4	83	81.1	83.6
Speed	1778	1755	1729	1704	1674	1642	1686
Line amperes	1.83	2.09	2.46	2.9	3.46	4.06	3.24

Performance Graph at 460V, 60Hz, 2.0HP Typical performance - Not guaranteed values





CD0005

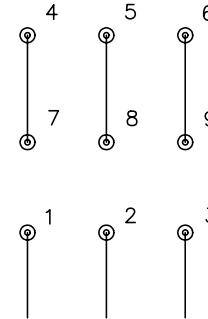


LOW VOLTAGE
(2Y)



LINE

HIGH VOLTAGE
(1Y)



LINE

NOTES:

1. INTERCHANGE ANY TWO LINE LEADS TO REVERSE ROTATION.
2. OPTIONAL THERMOSTATS ARE PROVIDED WHEN SPECIFIED.
3. ACTUAL NUMBER OF INTERNAL PARALLEL CIRCUITS MAY BE A MULTIPLE OF THOSE SHOWN ABOVE.
4. LEAD COLORS ARE OPTIONAL. LEADS MUST ALWAYS BE NUMBERED AS SHOWN.

REV. DESC: REVISE TO SHOW OPTIONAL COLORS

REV. LTR: E BY: JLP

REVISED: 01/19/99 10:15

TDR: 0171435

90000

FILE: AAA00005140

MDL: -

MTL: -

BALDOR ELECTRIC Co.

3PH, DV, 9 LEADS

CD0005